

Got any questions?
We're here to help!

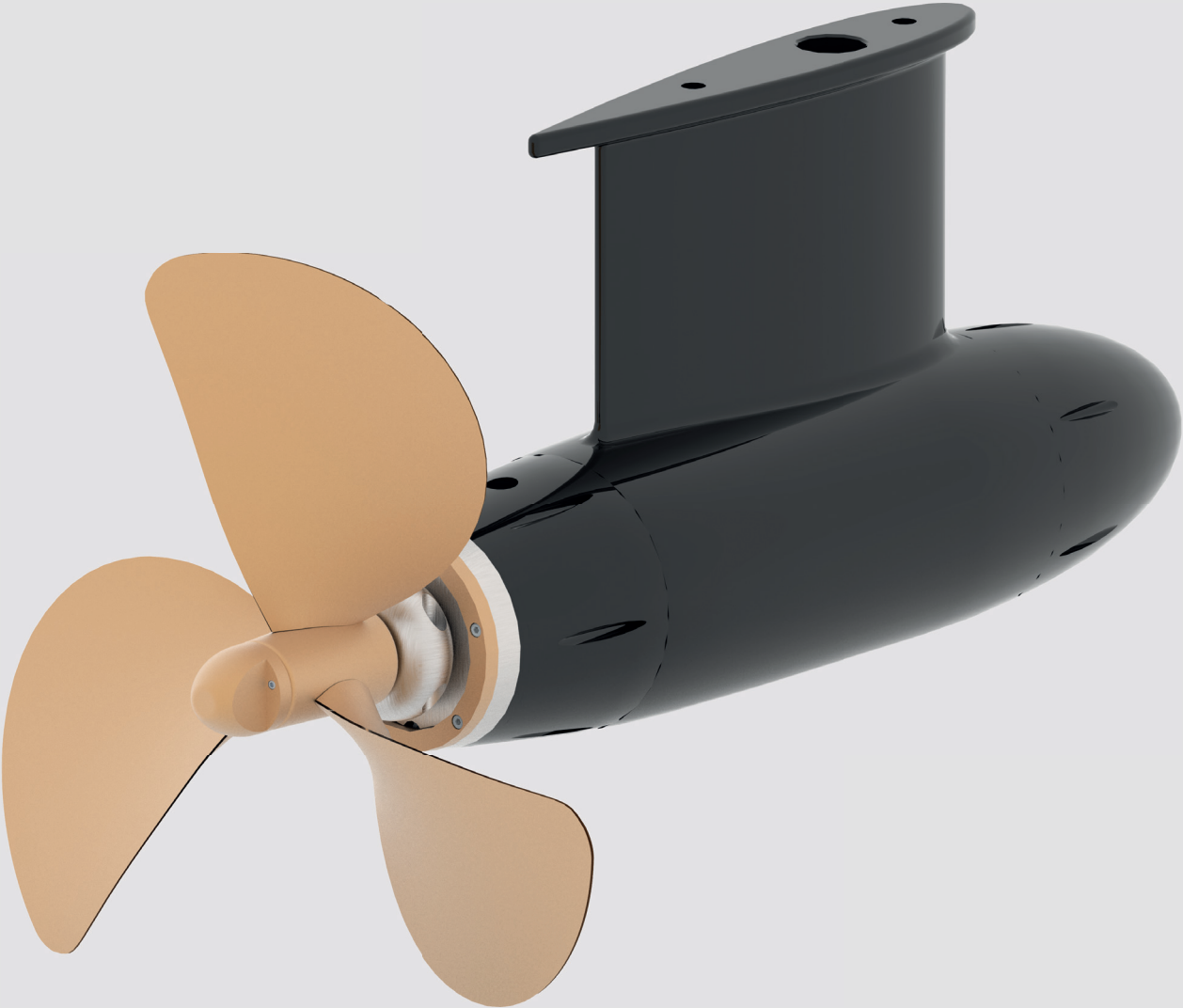
+31 521 36 1099

arka.nl

Do you have any questions or need personal advice? Schedule a consultation with one of our experts to find the best propulsion solution for your customer and application.



Masters
in electric
propulsion



Pod 60

Continuous power output 4,0 kW

The Pod 60 provides quiet, powerful performance with efficient direct drive technology. Made from seawater-resistant materials, it is durable, low-emission, and easy to install.

Specs

Technical data	Motortype	SMPM
	Framesize	50 EL
	Nominal bus voltage	51,2 VDC
	Model	POD
	Maximum stator current	146,66 A
	Rated speed	1500 min ¹
	Rated voltage	51,2 VDC
	Min. voltage	46,08 VDC
	Motor constant	0,27 Nm/A
	Rated phase current	93,886 A
	Rated torque	25,30 Nm
	Rated power S1 @ 51,2VDC 1500rpm	3974 Watt
	Peak power S2-10	6042 Watt
	Constant Electric	17,47 V/k-rpm
	Induction LS	0,25 mH
	Resistance of winding	39,019 mΩ
	Winding class	F
	Max. operating temperature	120 °C
	Weight	22 kg
	Efficiency @ rated speed-torque	93,44%
	Number of poles	12

Torque map		RPM	Nm
	Standstill peak	0	40,25
	Limit point	1450	39,79
	No load max	1900	1,27
	Standstill nominal	0	26,96
	Utilizable	1400	25,44
	No load max	1900	1,27

Controller	Type	48-275
	Nominal voltage	48 VDC
	Continuous current (60min.)	110 A
	Peak current (2min.)	275 A
	Boost current (10sec.)	330 A
	Cooling	Heatsink
	Max. amb. temp.	42 °C
	Efficiency	95,5%

Dimensions (enclosure)	Height	300 mm
	Width	300 mm
	Depth	220 mm
	Weight	9,5 kg
	IP	54

Joystick	Cycle live (more than)	2 Million
	Weight	0,85 kg
	IP	55

Included	Dc-dc converter	
	Input voltage	48 VDC
	Input current	5 A
	Output voltage	12 VDC
	Output current	20 A